



## Jerusalem Development Series, Charitable Receipts, Upcoming Programs, Shul Tours and More – February 5, 2024

### JERUSALEM: THE HOLY CITY'S DEVELOPMENT FROM ANTIQUITY TO TODAY

Join us for an online exploration of the growth of the city from its beginnings as a small town on a hillside to the modern city it is today with Jerusalem-based tour guide Joel Haber.

**Walnut Street Synagogue**

# JERUSALEM

THE HOLY CITY'S DEVELOPMENT FROM ANTIQUITY TO TODAY

**A FOUR-PART, FREE ONLINE SERIES**

The Old City: Jerusalem in Antiquity February 14	First Modern Neighborhoods: 1860-1880 March 13	Nachlaot: 1875-1920 April 17	Rechavia and Beyond: 1920-Present May 15
---	---	---------------------------------	---

(All Programs Begin at 7 PM Eastern)

Joel Haber was born and raised in New Jersey, and moved to Jerusalem in 2009. He is a licensed tour guide, specializing in tours of his home city, and also guides around the entire country.  
[www.FJIsrael.com](http://www.FJIsrael.com) - [Joel@FJIsrael.com](mailto:Joel@FJIsrael.com)

More Information and Registration:  
[walnutstreetsynagogue.com/jerusalem-series](http://walnutstreetsynagogue.com/jerusalem-series)  
[info@walnutstreetsynagogue.com](mailto:info@walnutstreetsynagogue.com)

This series is made possible by a grant from the Congregation Ahabat Shalom Religious Fund

**The Old City: Jerusalem in Antiquity**  
Wednesday, February 14, 7:00 pm EST (online)

Our series begins with an examination of the first stage of the city's development. We will discover the topography of the city, what the location offered in antiquity, and how the city grew from a small town on a hillside to a fortified (but still small) city for the bulk of its history.

<https://www.eventbrite.com/e/the-old-city-jerusalem-in-antiquity-tickets-795557222067?aff=oddtcreator>

## CSP

We are pleased to be a partner congregation of the Orange County Jewish **Community Scholar Program (CSP)**. Please join us at an upcoming program!



### **Jews on the Silver Screen**

**Part 5 – Dumbing Down Literature: *The Chosen* as Novel and Movie** – Tuesday, February 6, 1:00 pm EST (online)

**Part 6 – Spielberg before Schindler: How Jewish?** – Tuesday, February 13, 1:00 pm EST (online)

**Part 7 – Jewish Women in Movies** – Tuesday, February 20, 1:00 pm EST (online)

**Part 8 – Visible and Invisible Jewishness** – Tuesday, February 27, 1:00 pm EST (online)

Over eight enlightening weeks, we delve into the tapestry of Jewish representation, both overt and subtle, in Hollywood's history. From the pioneering Jewish visionaries who shaped global cinema to the enduring fascination with biblical narratives and the layers they hold, we uncover the intersections of culture and storytelling. We also confront and deconstruct stereotypes through the lens of Jewish gangsters and explore how cinema has exposed and healed societal ills. As we transition to adaptations of literature and the works of renowned directors like Steven Spielberg, we question the Jewish elements that lie beneath the surface. At the end of the series, we spotlight the roles of Jewish women in the industry and explore both the visible and invisible aspects of Jewishness in film, from unspoken identities to bold declarations.

#### **Part 5 – Dumbing Down Literature: *The Chosen* as Novel and Movie**

- I. Potok's Jewish New York
- II. Explaining Hasidic Spirituality
- III. Rod Steiger's Rebbe

#### **Part 6 – Spielberg before Schindler: How Jewish?**

- I. *ET*: A Story of Exile and Return?
- II. *The Twilight Zone*: A Jewish View of Aging
- III. The Lost Ark and the Battle between Good and Evil

#### **Part 7 – Jewish Women in Movies**

- I. Marjorie Morningstar
- II. Izzy Grossman and the Escape from Delancey Street
- III. Woody Allen's Jewish Mothers
- IV. Baby Houseman and the World of the Catskills

#### **Part 8 – Visible and Invisible Jewishness**

- I. *What's Up Doc*: Barbara Streisand's Unstated Jewishness
- II. *Avalon* and the Melting Pot
- III. Adam Sandler and Ben Stiller: Masters of Chutzpah
- IV. Cher Horowitz — Jewish American Princess

**Professor Howard Lupovitch** is Professor of History and Director of the Cohn-Haddow Center for Judaic Studies at Wayne State University. He was educated at the University of Michigan, and Columbia University (earning a Ph.D. in History from the latter). Over his career, Prof. Lupovitch has taught at Cornell University, Colby College, the University of Western Ontario, and the University of Michigan, where he was also a fellow at the Frankel Institute for Advanced Judaic Studies. Prof. Lupovitch is the author, most recently, of *Transleithanian Paradise: A History of the Jewish Community of Budapest, 1738-1938*, and is presently completing a history of the Neolog Movement and researching a new history of the Jews of Detroit. *This program is fully funded by a grant from the Jewish Community Foundation Orange County.*

[https://us06web.zoom.us/meeting/register/tZEIf--qpzsqE9L0TI6GHmNNyQ9GiR\\_uL-b?utm\\_source=CSP&utm\\_campaign=abc6042bc3-EMAIL\\_CAMPAIGN\\_2020\\_04\\_03\\_04\\_55\\_COPY\\_01&utm\\_medium=email&utm\\_term=0\\_5ee28fcb1-abc6042bc3-386548940#/registration](https://us06web.zoom.us/j/9199119191?source=CSP&utm_campaign=abc6042bc3-EMAIL_CAMPAIGN_2020_04_03_04_55_COPY_01&utm_medium=email&utm_term=0_5ee28fcb1-abc6042bc3-386548940#/registration)

## **Exile and Home: Tales of Traveling Rabbis**

**Part 1** - Wednesday, February 7, 1:00 pm EST (online)

**Part 2** - Wednesday, February 14, 1:00 pm EST (online)

**Part 3** - Wednesday, February 28, 1:00 pm EST (online)

**Part 4** - Wednesday, March 6, 1:00 pm EST (online)

Why does a great rabbi return to the town that had banished him? Who is the immigrant rabbi cruelly humiliated by his new havruta? And what happens when a man from Babylon marries a woman from Israel? The Talmud is riddled with travel narratives, stories of rabbis who leave their former lives behind and set out into the unknown, disoriented in unfamiliar territory, disparaged by unfriendly locals. This course looks at four such narratives, exploring the trials and tribulations of the traveling rabbis, and the lessons they must learn before they can arrive at their destination.

**Gila Fine** is a teacher of Aggada at the Pardes Institute of Jewish Studies, exploring the tales of the Talmud through philosophy, literary criticism, psychoanalysis, and pop-culture. She is also a faculty member of the London School of Jewish studies, the Nachshon Project, and Amudim Seminary, and has taught thousands of students at conferences and communities across the Jewish world. Gila's dynamic literary method and unique intertextual approach, ranging from folktales to fiction to film, bring the stories of the Talmud to life, revealing their relevance for our time. *Haaretz* has called her "a young woman on her way to becoming one of the more outstanding Jewish thinkers of the next generation."

[https://us06web.zoom.us/meeting/register/tZEIf-gggz4uG904vmgYOfDsHkceHTXbeVZU?utm\\_source=CSP&utm\\_campaign=ea3299c0b8-EMAIL\\_CAMPAIGN\\_2020\\_04\\_03\\_04\\_55\\_COPY\\_01&utm\\_medium=email&utm\\_term=0\\_5ee28fcb1-ea3299c0b8-386548940#/registration](https://us06web.zoom.us/meeting/register/tZEIf-gggz4uG904vmgYOfDsHkceHTXbeVZU?utm_source=CSP&utm_campaign=ea3299c0b8-EMAIL_CAMPAIGN_2020_04_03_04_55_COPY_01&utm_medium=email&utm_term=0_5ee28fcb1-ea3299c0b8-386548940#/registration)

## **"There's No Business like Show Business" - The Jewish Musical Tradition in America**

**Part 6 – Leonard Bernstein: A Genius Born of Multiple Musical Traditions** - Thursday, February 8, 1:00 pm EST (online)

**Part 7 – Morris Levy, Motown, and the Birth of Rock & Roll** - Thursday, February 15, 1:00 pm EST (online)

**Part 8 – Jews and the Folk Music Revival** - Thursday, February 22, 1:00 pm EST (online)

**Part 9 – American Nusach: Debbie Friedman and the Great American Jewish Sing-along** - Thursday, February 29, 1:00 pm EST (online)

Join us on this melodic exploration of a rich and diverse tradition that has not only reflected the Jewish-American experience but has also left an indelible mark on the nation's musical history. From the early Yiddish roots of Jewish immigrants to the groundbreaking compositions of Aaron Copland, the influence of Jews in the Jazz Revolution, and their role in shaping the landscape of Broadway and Rock & Roll, this series celebrates the enduring impact of Jewish musical traditions on American culture. With sessions dedicated to iconic figures like Irving Berlin, Leonard Bernstein, and Bob Dylan, as well as the transformative power of artists like Debbie Friedman, we explore how these artists navigated their Jewish identities within the evolving American musical tapestry.

### **Part 6 - Leonard Bernstein: A Genius Born of Multiple Musical Traditions**

- I. Bernstein and Jewish Boston
- II. Fusing Musical Traditions
- III. Jeremiah and the Kaddish: Jewish Symphonies?

### **Part 7 - Morris Levy, Motown, and the Birth of Rock & Roll**

- I. Childhood in Harlem
- II. "Rock & Roll"
- III. Bernie Essman – Motown in the Motor City

### **Part 8 - Jews and the Folk Music Revival**

- I. Re-Discovering Roots
- II. Music as Activism
- III. Robert Zimmerman/Bob Dylan's Dual Odyssey

### **Part 9 - American Nusach: Debbie Friedman and the Great American Jewish Sing-along**

- I. Summer Camp and the New American Judaism
- II. The Sacred and the Secular
- III. Celebrating the New Jewish Woman

**Professor Howard Lupovitch** is Professor of History and Director of the Cohn-Haddow Center for Judaic

Studies at Wayne State University. He was educated at the University of Michigan, and Columbia University (earning a Ph.D. in History from the latter). Over his career, Prof. Lupovitch has taught at Cornell University, Colby College, the University of Western Ontario, and the University of Michigan, where he was also a fellow at the Frankel Institute for Advanced Judaic Studies. Prof. Lupovitch is the author, most recently, of *Transleithanian Paradise: A History of the Jewish Community of Budapest, 1738-1938*, and is presently completing a history of the Neolog Movement and researching a new history of the Jews of Detroit. *This program is fully funded by a grant from the Jewish Community Foundation Orange County.*

**Please contact us at [central.walnutstreetshul@gmail.com](mailto:central.walnutstreetshul@gmail.com) for details on how you can register for this series**

### **What Does Shock Look Like? Israeli Art After October 7th**

Sunday, February 11, 1:00 pm EST (online)

All areas of life in Israel were shaken on October 7th and the aftermath of this shock as well as the continuing war have deeply affected the art scene too. In this session we'll briefly look at art from 2023 before October and then dive into the images that were and still are created since. What can art tell us about the current reality that we don't necessarily see in the news? We'll explore art responses, exhibitions and art works that are both praised and challenged to allow a different look at what we're experiencing these days and further understand the emotional climate in Israel in the past months.

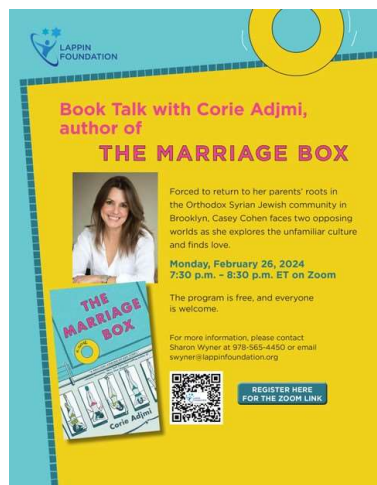
**Shirel Horovitz:** Through sculpting, drawing and sound, Shirel's installations and performances explore the relations between cities and communities. She earned her BFA from Bezalel Academy of Art and Design and her MA from the Interdisciplinary Art Program at Tel Aviv University. Her works have been exhibited in museums and galleries across Israel and the U.S. She is currently working on new works, among them, a sound installation to be exhibited in Ramat Gan Museum of Art. Alongside her art practice Shirel leads tours, lectures and is an art consultant with a variety of organizations. Since the outbreak of Covid-19, Shirel has adapted her live tours and lectures to engaging online experiences inviting people from around the world to explore the fascinating world of Israeli art.

[https://us06web.zoom.us/meeting/register/tZlvc--srjwrGN35ZPzKpUK5HYnRwqfGxpUi?utm\\_source=CSP&utm\\_campaign=cc077256e9-EMAIL\\_CAMPAIGN\\_2020\\_04\\_03\\_04\\_55\\_COPY\\_02&utm\\_medium=email&utm\\_term=0\\_5ee28fcb1-cc077256e9-386548940#/registration](https://us06web.zoom.us/meeting/register/tZlvc--srjwrGN35ZPzKpUK5HYnRwqfGxpUi?utm_source=CSP&utm_campaign=cc077256e9-EMAIL_CAMPAIGN_2020_04_03_04_55_COPY_02&utm_medium=email&utm_term=0_5ee28fcb1-cc077256e9-386548940#/registration)

## **COMMUNITY PROGRAMS**

### **The Magic Box – Book Talk with Author Corie Adjmi**

Monday, February 26, 7:30 pm EST (online program presented by the Lappin Foundation)



Join the Lappin Foundation for a book talk on *The Marriage Box* with author Corie Adjmi. The book is a novel about Casey Cohen who is forced to return to her parents' roots in the Orthodox Syrian Jewish

community in Brooklyn as she faces two opposing worlds, explores the unfamiliar culture and finds love.  
<https://lappinfoundation.tfaforms.net/54>

## CHARITABLE RECEIPTS

We have now sent receipts to acknowledge all donations made during the year. Some receipts were sent by Email while others were sent through the USPS based on donor preferences we had on file. If you have not yet received a receipt, please contact us at [central.walnutstreetsdul@gmail.com](mailto:central.walnutstreetsdul@gmail.com).

## SUPPORT ISRAEL IN BOSTON

### Israel Emergency Fund

Combined Jewish Philanthropies (CJP) has launched the **Israel Emergency Fund** in response to the unprecedented and horrifying attack against Israel was launched over Shabbat and Shemini Atzeret. 100% of donations received will help support victims of terror and address the unprecedented levels of trauma caused by these horrific attacks.

#### Donate here -

[https://give.cjp.org/give/525536/?utm\\_medium=email&hsmi=277433797&hsenc=p2ANqtz-8gOZCCFZuo0azQF8zaBKQdGAcCSLveZd6\\_d0V0waC554D5ms3kS7MKY-HlyHX9FnmkhRzMMuotkwUmlL90yJN57MAxgew&utm\\_content=277433797&utm\\_source=hs\\_email#!/donation/checkout](https://give.cjp.org/give/525536/?utm_medium=email&hsmi=277433797&hsenc=p2ANqtz-8gOZCCFZuo0azQF8zaBKQdGAcCSLveZd6_d0V0waC554D5ms3kS7MKY-HlyHX9FnmkhRzMMuotkwUmlL90yJN57MAxgew&utm_content=277433797&utm_source=hs_email#!/donation/checkout)

## SHUL TOURS

If you live in the Boston area and have never seen our historic shul, or haven't visited in a while, or if you plan to visit the area, we welcome you to see our shul in person and take a tour! Please follow the link below for more information and to request **Individual/Family** or **Group (new)** tours.

**Visitor Information** - <https://walnutstreetsynagogue.com/visit/>

## YAD CHESSED



Yad Chessed helps Jewish individuals and families who struggle with financial hardship pay their bills and buy food. As a social services agency rooted in the Jewish values of kindness (chessed) and charity (tzedakah), they are committed to helping those in need navigate a path toward financial stability while preserving their privacy and dignity. They provide emergency financial assistance, grocery gift cards and compassionate advice for those trying to make ends meet. Hundreds of families and individuals throughout the state rely on Yad Chessed to provide for their essentials, and even at times, a Jewish burial for a loved one. Members of our community, as well as others in the Jewish community, who need assistance may contact Yad Chessed by phone at 781-487-2693 or by Email at [intake@yadchessed.org](mailto:intake@yadchessed.org) for a confidential conversation. Questions can be directed to [info@yadchessed.org](mailto:info@yadchessed.org).

**Support Yad Chessed** - <https://givebutter.com/yadchessed>

## SYNAGOGUE FAMILY

Do you have milestones such as marriages, births, Bar and Bat Mitzvahs, special birthdays, graduations, etc. to share with our synagogue family? If so, please submit details

to [central.walnutstreetshul@gmail.com](mailto:central.walnutstreetshul@gmail.com) to be included in our weekly announcements. Photos are welcome!

## GIVING

Please visit our Giving page to send tributes, recognize yahrzeits and make other general donations to support the synagogue. Donations can be made online or through the mail.

<https://walnutstreetsynagogue.com/giving/>

## VISIT US ONLINE

Website

<https://walnutstreetsynagogue.com/>

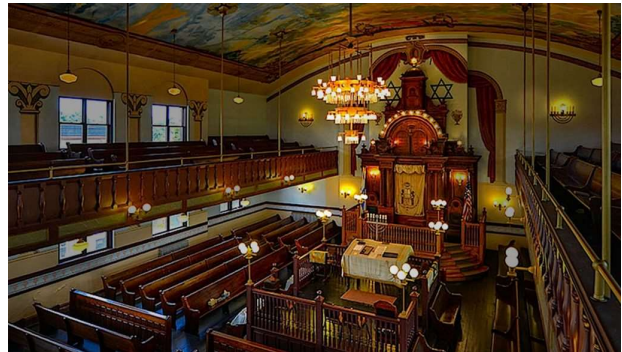
Facebook Page - Walnut Street Synagogue

<https://www.facebook.com/WalnutStreetSynagogue>

Facebook Group - Jews of Chelsea, MA Then and Now

<https://www.facebook.com/groups/ChelseaJews>

*The Walnut Street Synagogue is the center for Jewish history, education and culture serving Chelsea, Greater Boston and beyond and is the historic home of Congregation Agudas Sholom. (added to National Register of Historic Places in 1993)*



Walnut Street Synagogue, 145 Walnut Street, PO Box 505265, Chelsea, MA 02150-5265  
Contact us at: [central.walnutstreetshul@gmail.com](mailto:central.walnutstreetshul@gmail.com)